



NetMRI Technical Advisory Board (TAB) – Session #3

Dave Signori

June 8th, 2017

Agenda – Session #3

- Review of TAB objectives for new members
- Early Look: Roadmap and Cisco ACI updates
- Your Feedback: Poll on ROI metrics
- Best Practices: Light tutorial on Custom Reports
- Discussion on next topics

Technical Advisory Board Overview

- Goal:
 - Collaboration
 - Delivering superior product experience
- TAB Topic Types:
 - Roadmap reviews
 - Demos of product under dev
 - Best practices
 - Real-world user cases
 - Market trends and long term vision
- Requests
 - Complete Infoblox Communities profile
 - Participate in TAB calls
- Community Private Group



NetMRI Monthly Technical Overview

Customer Facing



- Regularly scheduled 1-hour customer facing Webex from Product Management, Product Marketing and Virtual Team.
- Audience:
 - Customers for review to expand on use cases
 - Prospects
 - Infoblox sales for enablement
- Includes technical sales presentation and demo

Device Support Velocity

Added over the last 2 calendar years

3com, A10, AcmePacket,
Alcatel, Allied Telesys,
Alteon, Arista, Aruba,
BlueCoat, BNT, Brocade,
Check Point, Cisco, Citrix,
Crossbeam, Dell, Enterasys,
Exinda, F5, FireEye,
Force10, Fortinet, Gigamon,
H3C, Huawei, HP, Juniper,
McAfee, Moxa, MRV, NEC,
Netscreen, Nortel, Palo Alto,
Ruggedcom, SEL,
Stonesoft, Symbol

221
Models

36
Vendors

12
Device
Types

Routers
Switches
Switch-Routers
Firewalls
Load Balancers
Proxies
Wireless Controllers
Blade Switches
VoIP Gateways
Storage Appliances
Console Servers
Access Control System

NetMRI Policy Subscription Services

Security Policy Audit, Device Vendor Vulnerability Audit and Life Cycle Management

- EmpoweredAdvisor™ helps ensure your network is secure, compliant, and up-to-date.
 - Add-on service for NetMRI customers that provides a constantly-updated, curated feed of a manufacturer's security advisory content (i.e. PSIRTs) and life cycle management announcements (i.e. EOS, EOL)
 - Always-On Analysis of Security Advisories
 - Timely Alerts on the Advisories that may affect your network
 - Take Remedial Action, with Streamlined Processes
 - Tight Integration with NetMRI Core Features
- Configuration Policy Service
 - DISA STIG Policy Updates

List EoX Cisco Devices

Date Range: 2016-09-21 00:00:00 to 2016-09-21 23:59:59

Device Groups: All Devices

List all Cisco Devices

Name	Model	Type	Vendor	sysLocation	Eol Status	Eos Date	Eol Date
EMPRT-OTT01	2911	Router	Cisco		Announced	2017-12-09 00:00:00	2022-12-31 00:00:00
empasa-otw02	ASAS510	Firewall	Cisco	OTW	End of Sale	2013-09-16 00:00:00	2018-09-30 00:00:00
empswtch-pc01.empowered.ca	catayst3560G48PS	Switch	Cisco		End of Sale	2013-01-30 00:00:00	2018-01-31 00:00:00
lab3750	catayst37xxStack	Switch-Router	Cisco	CANADA_ONTARIO_KANATA_1 HNIES RD	End of Sale	2013-01-30 00:00:00	2018-01-31 00:00:00
empswtch-ops01.empowered.ca	catayst3560G48PS	Switch	Cisco		End of Sale	2013-01-30 00:00:00	2018-01-31 00:00:00
empswtch-ops02.empowered.ca	catayst3560G48PS	Switch-Router	Cisco		End of Sale	2013-01-30 00:00:00	2018-01-31 00:00:00
gwempowerKAlt.pathcom.com	3825	Router	Cisco		End of Sale	2011-11-01 00:00:00	2016-10-31 00:00:00
gwempowerPK.pathcom.com	2001	Router	Cisco		End of Sale	2011-11-01 00:00:00	2016-10-31 00:00:00
EH1_2514_m01162	2514	Router	Cisco	CANADA_ONTARIO_GUELPH_75 SOUTHGATE DR	End of Support	2002-04-30 00:00:00	2007-05-01 00:00:00
EH1_2501_m01162	2501	Router	Cisco	CA_ONTARIO_GUELPH_75 SOUTHGATE DR	End of Support	2002-04-30 00:00:00	2007-05-01 00:00:00
z2-ca1-3550	catayst355024	Switch	Cisco		End of Support	2006-05-02 00:00:00	2011-05-02 00:00:00
autoconfig	catayst355024	Switch	Cisco		End of Support	2006-05-02 00:00:00	2011-05-02 00:00:00
autoconfig	catayst355024	Switch	Cisco		End of Support	2006-05-02 00:00:00	2011-05-02 00:00:00
Miam3802	3620	Router	Cisco		End of Support	2003-12-31 00:00:00	2008-12-31 00:00:00
empswtch-rm01.empowered.ca	catayst355024	Switch-Router	Cisco		End of Support	2006-05-02 00:00:00	2011-05-02 00:00:00

Page 1 of 1 | Displaying 1 - 15 of 15

Updated at 2016-09-23 05:58:25

Created on: 2016-09-21 06:03:30

Infoblox Disclaimer

The product roadmap and related information, such as future releases, product features and new product introductions, are for informational purposes only and are based on Infoblox's current development efforts and plans.

These development efforts and plans are subject to change based on changes in the overall networking market, changes in the demands of our customer base or other factors such as the technical feasibility, market acceptance or profitability of a new product or feature.

There can be no assurance that Infoblox will introduce the future products, features or enhancements described in this presentation and Infoblox assumes no responsibility to introduce such products, features or enhancements.

The information included herein does not constitute a representation or warranty regarding existing or future products.

Roadmap

Roadmap Removed

Cisco ACI – Infoblox Overview



NetMRI /
NIOS

Changes

Discovery

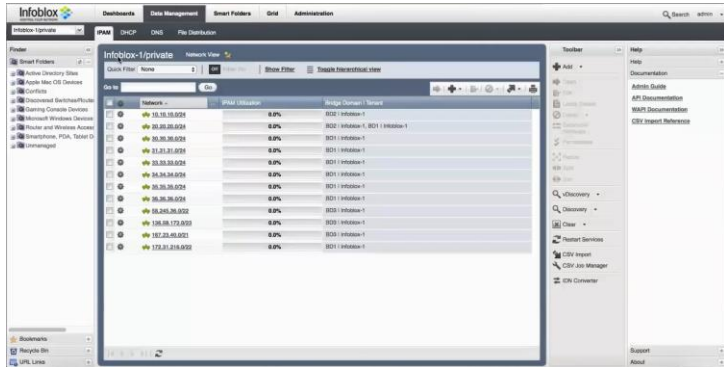
Discovery Only for
8.2 / 7.2



Traditional
Networking

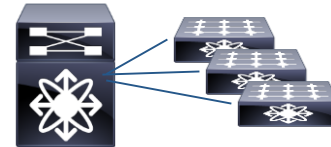


Over 60 Vendors Supported



Discovery of SDN
assets

- Tenant/VRF
- Subnet
- Bridge Domain
- Fabric node
- APIC controller
- EPG
- Application profile
- End host



Software-
Defined
Networking

Infoblox Cisco ACI Support

Discovery Mapping

Infoblox NetMRI 7.2

ACI	NetMRI
Fabric node (leaves and spine)	Device object of type ACI Fabric Node *
APIC controller	Device object of type ACI APIC Controller
Fabric nodes	Group of Fabric Nodes
Tenant	Tenant object
VRF	VRF object
Groups of VRFs	Network View
Application Profile	Application Profile object with Tenant attribute
Bridge Domain	Bridge Domain object w/ Tenant and VRF attributes
EPG	EPG object w/Tenant, VRF, Bridge Domain and Application Profile attributes
Subnet	Subnet w/Tenant, VRF, and Bridge Domain attributes
End Host	End Host object with EPG attribute

* NetMRI device record includes attributes like model, OS, inventory, neighbors, interfaces, address tables, ARP tables.



ROI
Your Feedback
6/8/2017

ROI

Screen Share



Custom Reports

Best Practices – Dave Signori
6/8/2017

Custom Reports

- Data Types and Attributes based on API
 - See <https://netmri.com/api/docs>
 - Go to “API Index” and search on your data type (i.e. “ARP Table Entries”)
- What Attributes appear:
 - Click on the Model link (i.e. “IfArp”) to see Class and Attributes
 - Method calls (with “[M]” in the Attribute) are commonly the one layer deep relationship classes.
 - See Data Type value (i.e. String, Integer, DateTime) to know what kind of operator to use for filtering. See “Entering Relative Dates and Times” section of Admin Guide for DateTime filtering tips.
 - Description is the same value that appears when hovering in the UI
- NetMRI Object and Data Relationship Diagrams:
 - See <https://community.infoblox.com/t5/API-Examples/NetMRI-Object-and-Data-Relationship-Diagrams/m-p/3739/highlight/true#M20> but note this is based on 6.8. Might be helpful.
- Miscellaneous
 - Checking “Short Headings” will display “Name” as opposed to “Device: Name” and “Interface: Name”, for example.
 - There may be some Attributes that are displayed where it wasn’t intended (so could be a defect), as in “cap_admin_status_ind”. You can still use them but they may be pulled later during a cleanup.
 - Custom Fields are available.
 - There is a known defect for custom fields where the prefix is some times left off (i.e. “Device” instead of “ARP Device”)

Custom Reports

Screen Share

Next Session - Feedback

- Frequency of meetings?
- Topic types for future sessions?
 - Early Look (roadmap and demo)
 - Best Practices and real world use cases
 - Your Feedback on market trends and long term vision
- Topics for future sessions?
 - Full session on rule building
 - CCS Scripting Tutorial
 - Best Practices:
 - Discovery
 - Your Feedback
 - SDN Support
 - Mobility and Network Automation
 - Customer presentation on NetMRI usage



Infoblox 

